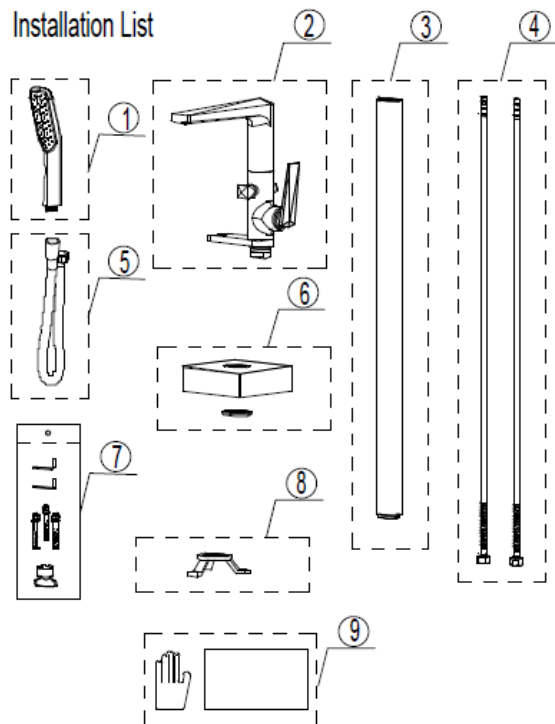
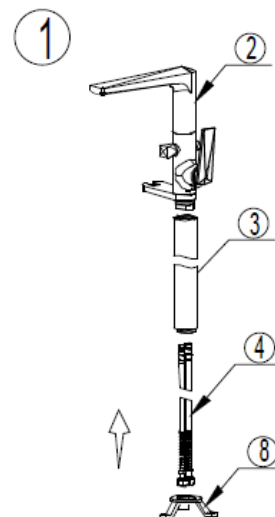


Installation List

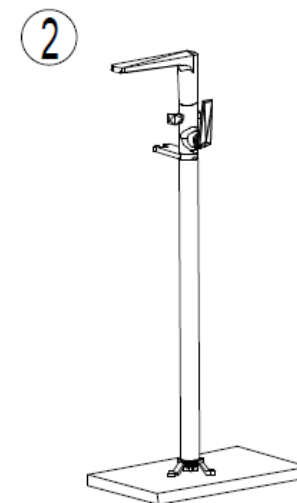


FLOOR STAND BATH MIXER (A)

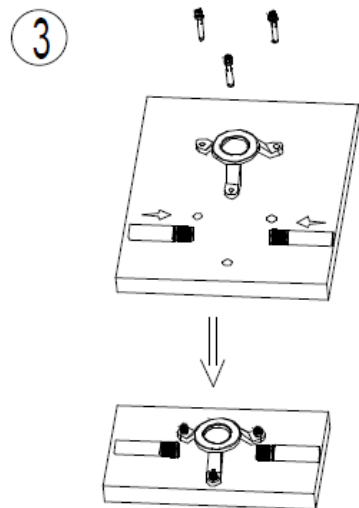
S/N	Description	No.s
1	hand shower	1
2	bath faucet	1
3	faucet tube	1
4	Inlet flexible hose	2
5	shower hose	1
6	Flange	1
7	screws set	1
8	Fixing seat	1
9	instruction	1



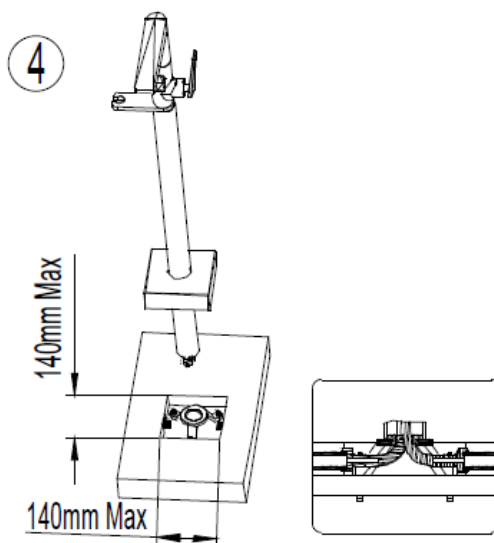
1. Put the inlet flexible hose (4) through faucet tube (3), and fix the inlet hose (4) to bath faucet (2). Then fasten the fixing seat (8) to the faucet tube (3)



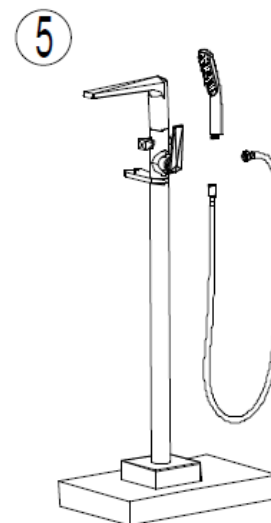
2. Mark the right position to the floor by assembled faucet in step 1.



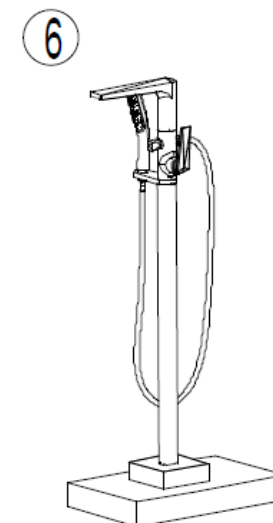
3. Drill out the hole as per the marked position, then fix the explosion screws (7) and fasten to the fixing seat (8).



4. Drill out the hole as per the marked position, then fix the explosion screws (7) and fasten to the fixing seat (8).



5. Flush any contaminates in supply lines for 30-60 seconds until water is clean. Then, fix the assembled faucet to the seat (8).



6. Complete as picture.