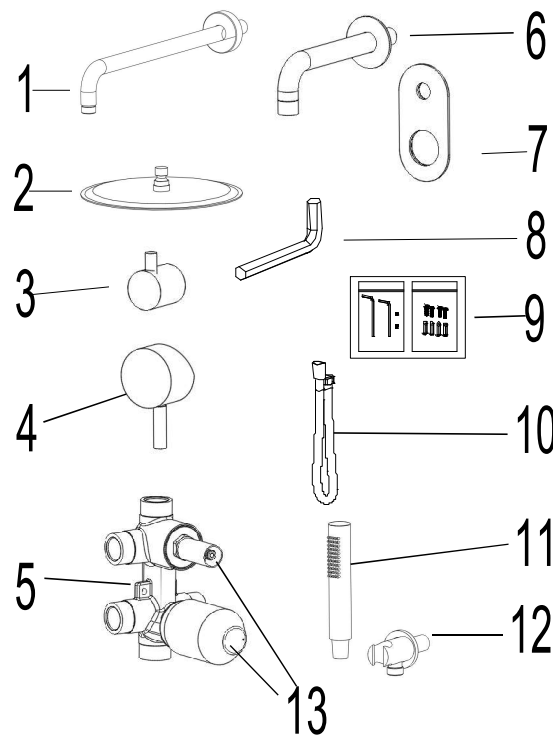
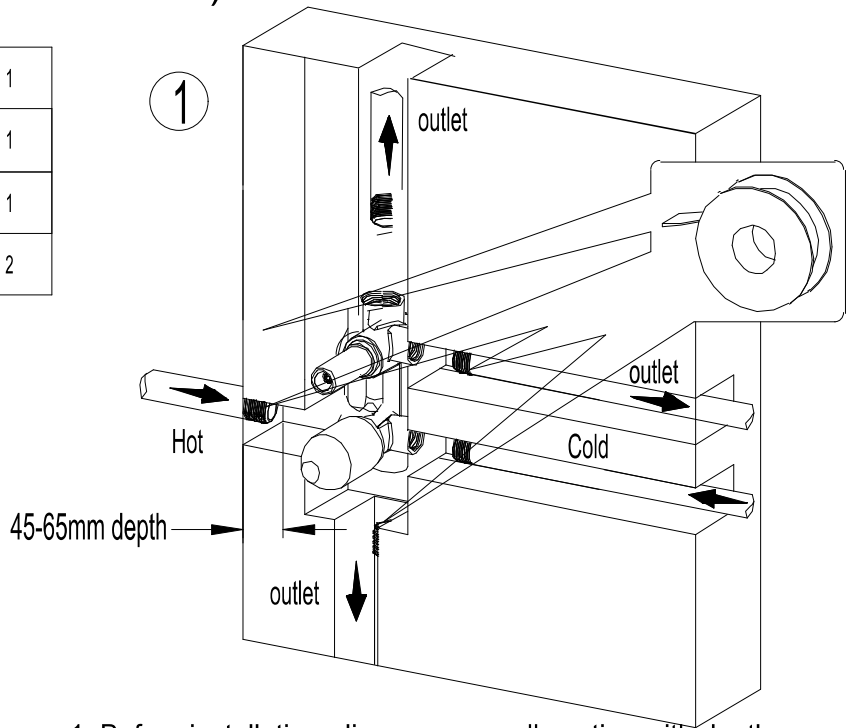


Installation List

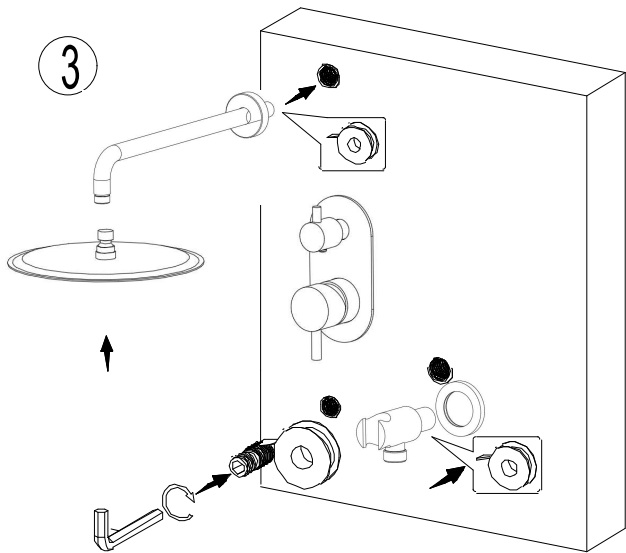
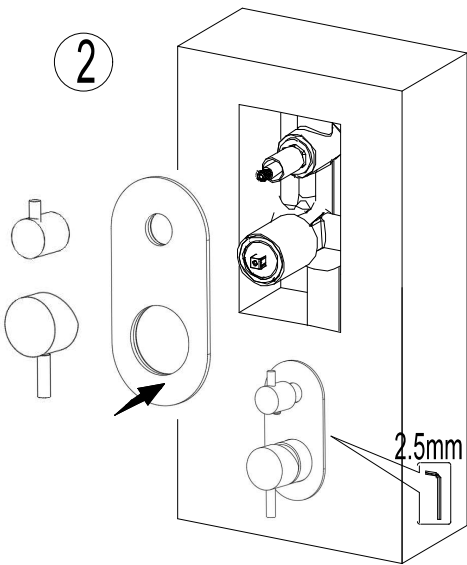
CONCEALED SHOWER SET (THREE FUNCTION)



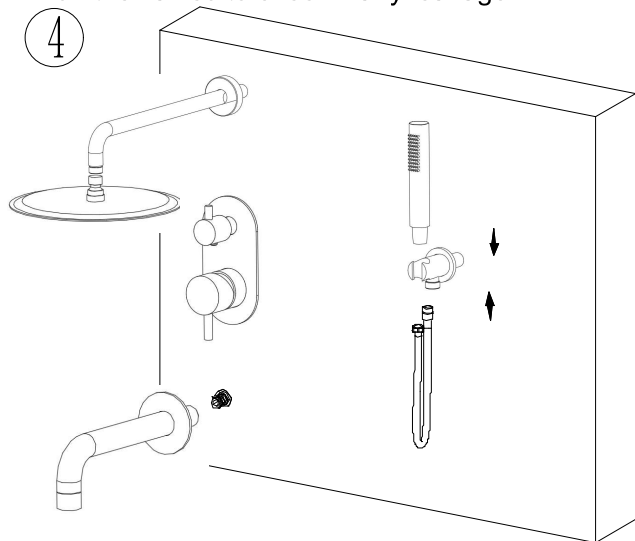
S/N	Description	No.s
1	Shower arm	1
2	Rain shower	1
3	diverter handle	1
4	handle	1
5	faucet concealed body (3 function)	1
6	spout	1
7	face plate	1
8	8mm allen key	1
9	screws set	1
10	shower hose	1
11	hand shower	1
12	shower holder with connector	1
13	Protective sleeve	2



1. Before installation, dig a proper wall position with depth 48-55mm , and flush the inside and outside dirt. Fix the concealed body (5), then fasten the screws. Turn on the valves to check if any leakage.



3. Fix the shower arm (1) to wall, and the rain shower (2) to the shower arm (1). Take off the connector from spout (6) and fix to wall. Then, fix the shower holder with connector (12) to the wall.



4. Fix the shower hose (10) and hand shower (11) to the shower holder (12). Put the flange of the spout (6) to wall, and fasten the spout (6) to the wall.